

## CATALOGUE

### B-15 CLASS BACK BOX

A product that prevents the spread of **flames and smoke during a fire**

Certified and designed for fast installation.



# Company introduction

## · History

- 2024 12 **Kaune** sole agency in South Korea.
- 07 **Astro** sole agency in Marine Segment.
- 07 **B-15 class back box** achieves BV Certification for fire protection.
- 2023 12 Registered vendor to **KANGNAM** Shipbuilding.
- 09 Registered vendor to **MODEC**.
- 08 Registered vendor to **SEATRIUM**.
- 03 Establishment of **Unit Toilet Factory**.
- 2022 05 Registered vendor to **HSG Sungdong** Shipbuilding.
- 04 Acquired ISO 45001:2018 certification.
- Registered vendor to **DAE SUN** Shipbuilding & Engineering Co., Ltd.
- 02 Registered vendor to **Hyundai** Heavy Industries.
- 2021 09 Registered vendor to **Zvezda** Shipbuilding in Russia.
- 06 Development of **GRP Ex Junction Box** certification completed.
- 2020 06 Registered vendor to **Hanjin** Heavy Industries.
- 2019 10 Registered vendor to **Hyundai Mipo** Dockyard (HMD) Co., Ltd.
- 2014 06 Registered vendor to **DAEWOO** Shipbuilding & Marine Engineering Co., Ltd.
- Low Location Light for H.3401
- 2013 10 Registered vendor to **SAMSUNG** Heavy Industries Co., Ltd.
- 2009 02 **Established KME Co., Ltd.**



※ For more information visit [h-kme.com](http://h-kme.com)

## · Location



### Busan (Head Office)

29, Nakdong-daero 1302 beon-gil,  
Sasang-gu, Busan, South Korea



### Gimhae (Office/factory)

25, Seobu-ro 1331 beon-gil, Juchon-myeon,  
Gimhae-si, Gyeongsangnam-do, South Korea



# KME Company Overview

KME is a company specialized in providing ship safety solutions for the maritime industry, offering a range of safety and convenience equipment, including the high-performance B-15 class back box, through custom product design and manufacturing.

KME prioritizes safety and efficiency in maritime environments, and is recognized in the global market through product development and technical support tailored to customer needs. Our goal is to provide the highest quality and safety, contributing to the advancement of the maritime industry.





# Product Overview

- The B-15 class back box plays an important role in protecting ships from fire and smoke. In the event of a fire, it rapidly expands to quickly seal installation holes and effectively prevent the spread of fire within the vessel, delivering optimal fire protection performance.
- This product is certified with a B-15 firewall rating and is designed to meet the high safety standards required in the maritime environment.



## Firewall Performance

- It reacts to flames by expanding rapidly, sealing openings quickly to prevent the spread of fire and smoke, thereby minimizing damage.
- It prevents damage by blocking the transfer of heat with insulating material.



# Functions of B-15 Class Back Box.

## Complies with B-15 Fire Rating

Meets the IMO B-15 fire protection standards, withstanding flames and high temperatures for at least 30 minutes while maintaining structural integrity.

## Fire-Responsive Sealing

Equipped with intumescent material that expands under heat to seal the installation opening, preventing the spread of fire and toxic gases to adjacent areas.

## No Enclosure Required

Can be installed directly without an additional enclosure, enabling simple and efficient installation.



## Ship Safety Certification Regulations

The product has been certified for the safety of ships.



**BV**  
(Bureau Veritas)



**MED**  
(Marine Equipment Directive)

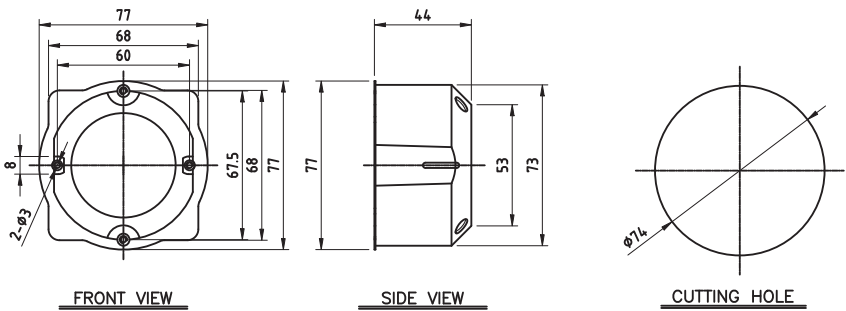


· Product Specifications



**KB-15S**

B15 FIRE BOX SINGLE



FRONT VIEW

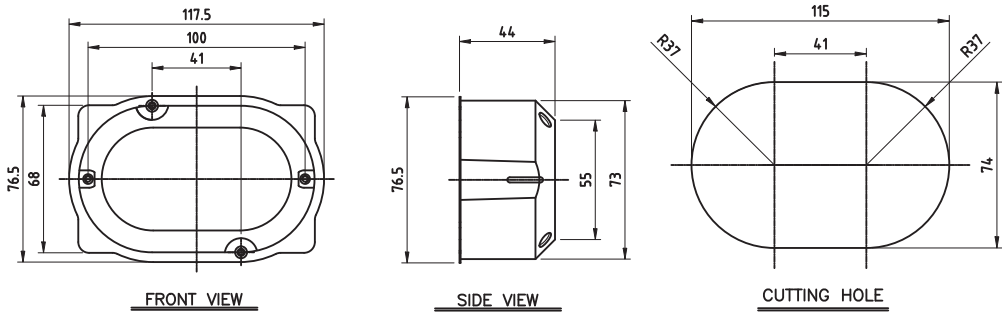
SIDE VIEW

CUTTING HOLE



**KB-15A**

B15 FIRE BOX 3MODULE



FRONT VIEW

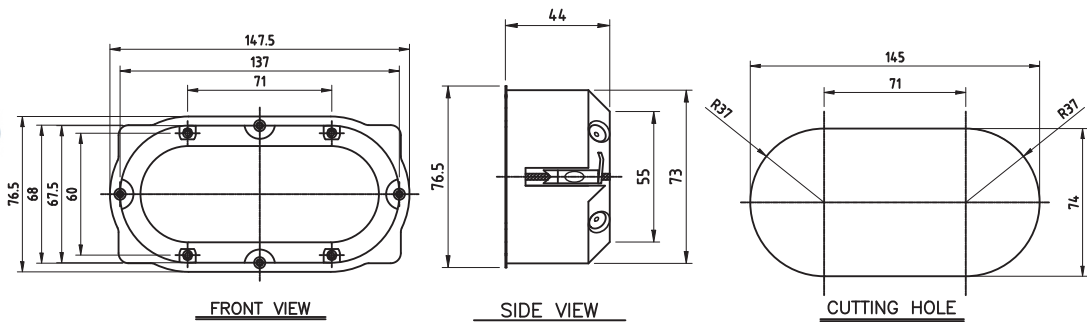
SIDE VIEW

CUTTING HOLE



**KB-15D**

B15 FIRE BOX DOUBLE



FRONT VIEW

SIDE VIEW

CUTTING HOLE

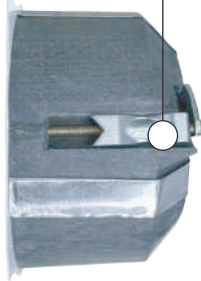
· Detail

It prevents electrical leakage and electric shock by using insulating materials.



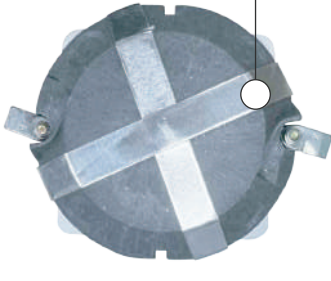
FRONT

It is easy to install on ship wall panels.



SIDE

It helps the product maintain its shape for a long time during a fire.



BACK



# Future-Oriented Vision

KME Co., Ltd. is committed to continuous research and development to improve safety and efficiency in the maritime industry.



## Continuous Innovation

We will lead the advancement of the maritime industry by continuously developing new technologies and solutions.



## Global Partnerships

Strengthening our global network to create value in various markets by collaborating with customers worldwide.

We prioritize customer safety and ensure a stable onboard environment by providing high-quality products that comply with strict fire protection standards.





---

· **ADDRESS** : 29, Nakdong-daero1302 beon-gil, Sasang-gu, Busan, South Korea  
· **TEL** : +82-51-327-2670   · **FAX** : +82-51-327-2673   · **E-mail** : sales@h-kme.com