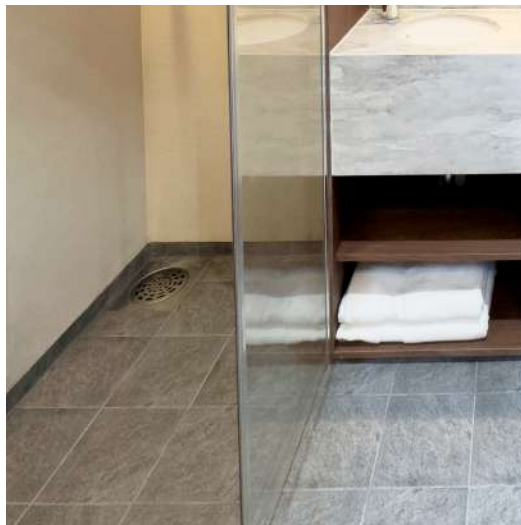


UNIT TOILET

High-quality Customized Toilet System



PREFABRICATED WET UNITS

With many years of experience and specialised competence, KME offers fully fitted wet units. The KME wet units are ideal for marine accommodations, from cruise ships to offshore installations.

The KME wet units, whether standard or custom-made, are manufactured according to the strictest rules and regulations and are fabricated from only first-class materials.

In our design, the emphasis is on using durable solutions to ensure maximum quality, comfort, and well-being of our customers, whether they are ship owners, shipyards, or end users.

The units are manufactured with a great deal of consideration given to the ease of handling and installation.

Throughout the production process, the units are subjected to strict quality control to ensure that all of our materials conform to our policy of supplying only first-class quality.

KME products can be specially manufactured according to customer requirements and adhere to the highest product quality standards.

Thank you.

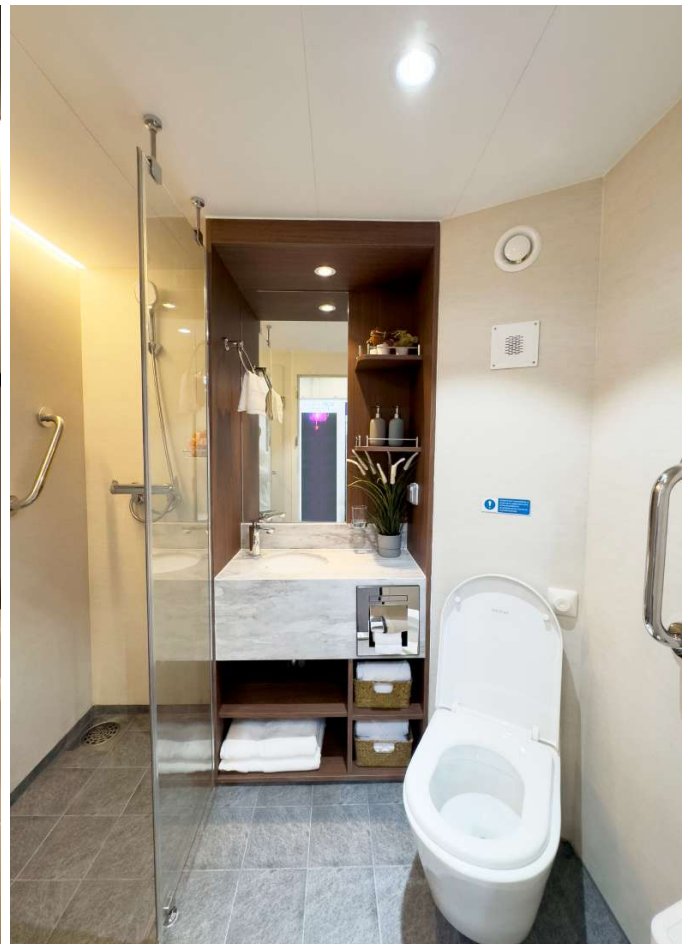


HIGH-END UNIT

Bath & Shower Type

KME UNIT TOILET provides type-specific functions, is durable, well-designed, and systemized, and offers a single finished product. We can directly produce and supply products of various designs, such as shower booth types and bathtub types, as well as customized designs based on customer standards.

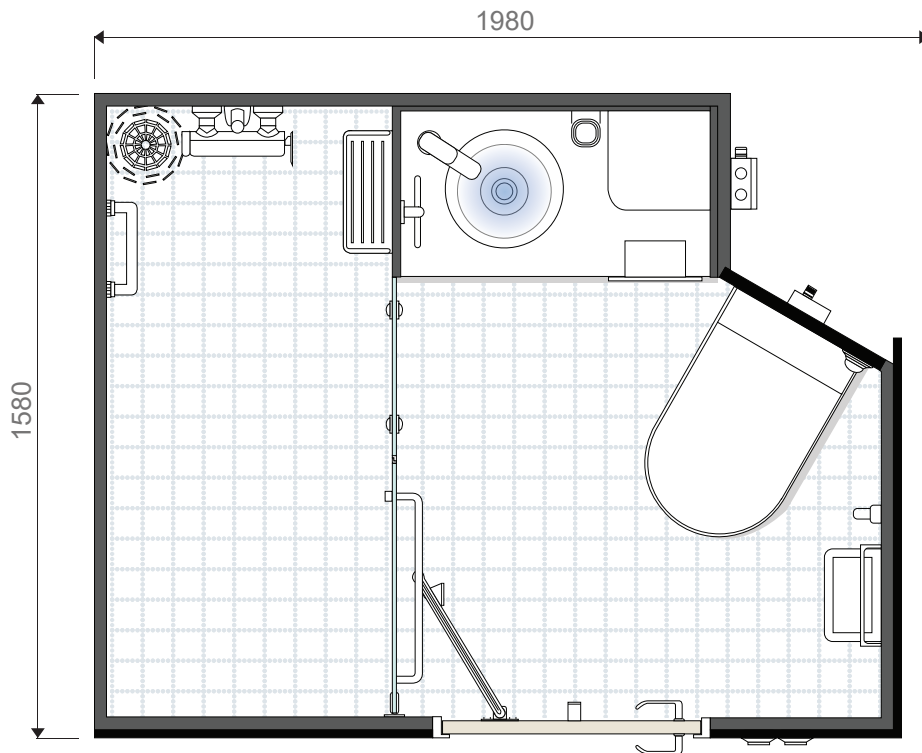
- Flexible Design
- High Quality
- Easy Handling
- Special production
- Competitive Pricing
- Simple Installation
- Compliance with Strict Regulations
- Made from Grade-A Materials



PREFABRICATED WET UNIT

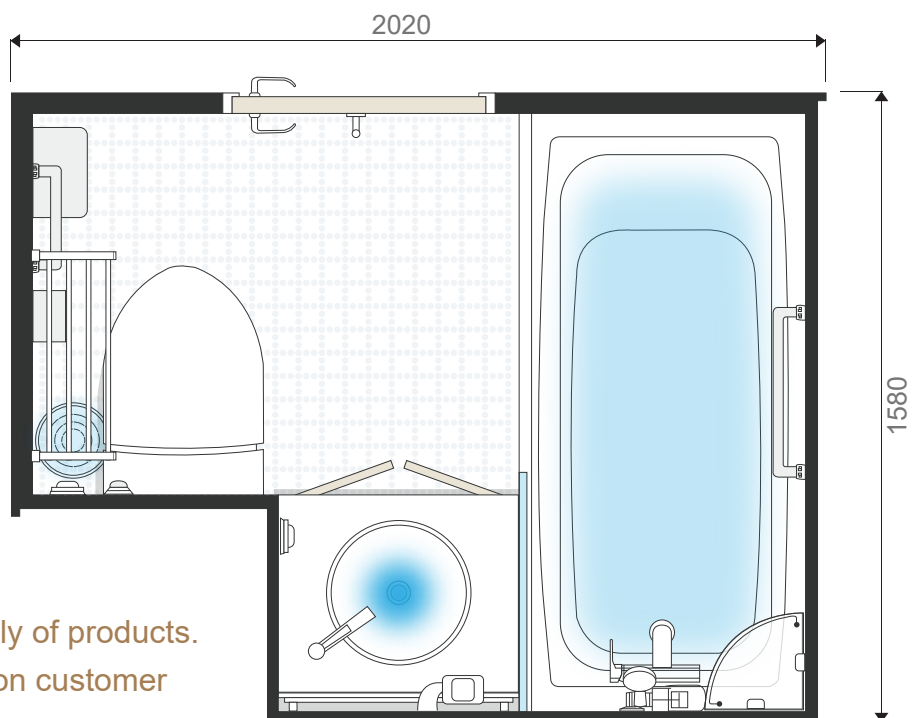
HIGH-END TYPE GENERAL TYPE

We can directly produce and supply products of various designs, such as shower booth types, bathtub types, and customized designs based on customer standards.



SHOWER TYPE

- Direct production and supply of products.
- Custom production based on customer requests.



BATH TYPE

- Direct production and supply of products.
- Custom production based on customer requests.

Specifications

HIGH-END TYPE GENERAL TYPE

• Shower • Bath

| No. | Description | Specification | Model no | Q'TY / SET | |
|-----|---|--|-------------------------|------------|---|
| | | | | S | B |
| 1 | FLOOR | MOSAIC TILE ON 3.2 mm STEEL PLATE (GROUTING : GRAY CEMENT) | KME STANDARD | 1 | 1 |
| 2 | INSIDE WALL PANEL | PAINTED ON 0.6mm GALV'D STEEL PLATE W/15mm MINERAL WOOL, TOTAL THK. 30mm | KME STANDARD | 1 | 1 |
| 3 | OUTSIDE WALL PANEL | PVC LAMINATED ON 0.6mm GALV'D STEEL PLATE W/15mm MINERAL WOOL, TOTAL THK. 20mm | KME STANDARD | 1 | 1 |
| 4 | DOOR FRAME | BAKED ENAMEL PAINTED ON 1.5mm STEEL PLATE CLEAR OPENING (600CW x 1800CH, 800CW x 1800CH (HOSPITAL ONLY)) | KME STANDARD | 1 | 1 |
| | DOOR BLADE W/LOCK | PVC LAMINATED ON 0.6mm GALV'D STEEL PLATE DOOR LOCK : INDICATOR MORTISE LATCH | KME STANDARD | 1 | 1 |
| 5 | WATER CLOSET (YARD SUPPLY) | WALL MOUNTED VACUUM TYPE WHITE VITREOUS CHINA W/BIDET, "YARD SUPPLY & KME INSTALL" | - | 1 | 1 |
| 6 | SOIL PIPE (VACUUM SYSTEM) | Ø50 OUTLET W/RUBBER HOSE JOINT (YARD SUPPLY) | - | 1 | 1 |
| 7 | HI-MACS TOP W/WASH BASIN | TOPCOUNTER(12t) & WHITE VITREOUS CHINA SINGLE LEVER MIXED FAUCET W/POP UP WASTE | - | 1 | 1 |
| 8 | UNDER CABINET | FLOATING TYPE UNDER CABINET 600(W)*750(H)425(D)_HOSPITAL ONLY, 600(W)*750(H)*525(D) | KME STANDARD | 1 | 1 |
| 9 | SHOWER MIXER | MIXING VALVE SINGLE LEVER TYPE W/TELEPHONE TYPE SHOWER HEAD & HOSE & SLIDE BAR | - | - | 1 |
| 10 | SHOWER MIXER | BUILT-IN SHOWER TYPE | - | 1 | - |
| 11 | LED MIRROR | 600W x 800H W/LED LIGHT | KME STANDARD | 1 | 1 |
| 12 | LED DOWN LIGHT | CEILING MOUNTING TYPE (AC 220V, 60Hz, 1Ø, 13W, IP44) | - | 1 | 1 |
| 13 | FLOOR SCUPPER & DRAIN / WASTE PIPE | SUS 304 FRAME W/Ø150 SUS 304 GRATING & 40A SPP W/RUBBER HOSE JOINT | KME STANDARD | 1 | 1 |
| 14 | EXHAUST VALVE | WALL MOUNTING TYPE W/ELBOW CONNECTOR KU-100/WHITE | KME STANDARD | 1 | 1 |
| 15 | DOOR SWITCH | POLAR WHITE (AC 250V 16AX / 1WAY, IP 20) | KME STANDARD KSW-F11 | 1 | 1 |
| 16 | JUNCTION BOX (FOR LIGHT & RECEPTACLE) | ABS RESIN (6-GLAND, 9P), IP44 | KME STANDARD | 1 | 1 |
| 17 | JUNCTION BOX (FOR 2W SPEAKER) | ABS RESIN (4-GLAND, 6P), IP44 | KME STANDARD | 1 | 1 |
| 18 | SPEAKER(2W) (FOR U/T) | FLSH TYPE (YARD SUPPLY) | - | 1 | 1 |

Specifications

HIGH-END TYPE GENERAL TYPE

• Shower • Bath

| No. | Description | Specification | Model no | Q'TY / SET | |
|-----|------------------------------|--|--------------|------------|---|
| | | | | S | B |
| 19 | SHOWER BOOTH | HINGE TYPE : SUPPORT W/8T TOUGHEN GLASS (TRANSLUCENT) | KME STANDARD | 1 | - |
| 20 | TOWEL SHELF & BAR | SUS304 / 535 x 211 x 117 | - | - | 1 |
| 21 | TOWEL HANGER | SUS & CHROME PLATED BRASS | - | 1 | - |
| 22 | SOAP DISH | PLASTIC & CHROME PLATED | - | 1 | 1 |
| 23 | SHOWER SHELF | GLASS & CHROME PLATED BRASS | - | 1 | 1 |
| 24 | DOUBLE PAPER HOLDER | SUS & CHROME PLATED BRASS | - | 1 | - |
| 25 | PAPER HOLDER (COLOR : BLACK) | SUS & CHROME PLATED BRASS | - | - | 1 |
| 26 | GRAB RAIL | SUS & CHROME PLATED BRASS | - | - | 2 |
| 27 | DOOR ADJUSTER | SUS & CHROME PLATED BRASS | - | 1 | 1 |
| 28 | COAT HOOK | STAINLESS STEEL COLOR : SILVER | - | 1 | 1 |
| 29 | RECEPTACLE (FOR HAIR DRYER) | AC 250V, 50/60Hz, 16A | KME STANDARD | 1 | 1 |
| 30 | RECEPTACLE (FOR BIDET) | AC 250V, 50/60Hz, 16A | KME STANDARD | 1 | 1 |
| 31 | HOT WATER PIPE | Ø12 PVC COVERED COPPER PIPE W/BITE TYPE UNION BALL VALVE (Ø12xPF1/2") W/ SUS FLEX. HOSE (L=300, PT1/2" MALE) | KME STANDARD | 1 | 1 |
| 32 | FRESH WATER PIPE | Ø12 PVC COVERED COPPER PIPE W/BITE TYPE UNION BALL VALVE (Ø12xPF1/2") W/ SUS FLEX. HOSE (L=300, PT1/2" MALE) | KME STANDARD | 1 | 1 |
| 33 | BATH TUB | GLASS FIBER REINFORCED PLASTIC(SMC) W/OVER FLOW WHITE (720X x 1500L) | KME STANDARD | - | 1 |
| 34 | GLASS PARTITION | AL, FRAME W/8.0T TOUGHEN GLASS(TRANSLUCENT) | KME STANDARD | - | 1 |
| 35 | STOP V/V (FOR BIDET) | CHROME PLATED BRASS | - | 1 | 1 |
| 36 | WASTE BASKET | ABS(WHITE), 6LITER 225(W) x 240(H) x 135(D) | - | 1 | 1 |

GENERAL UNIT

Bath & Shower Type

KME UNIT TOILET provides type-specific functions, is durable, well-designed, and systemized, and offers a single finished product. We can directly produce and supply products of various designs, such as shower booth types, bathtub types, and customized designs based on customer standards.

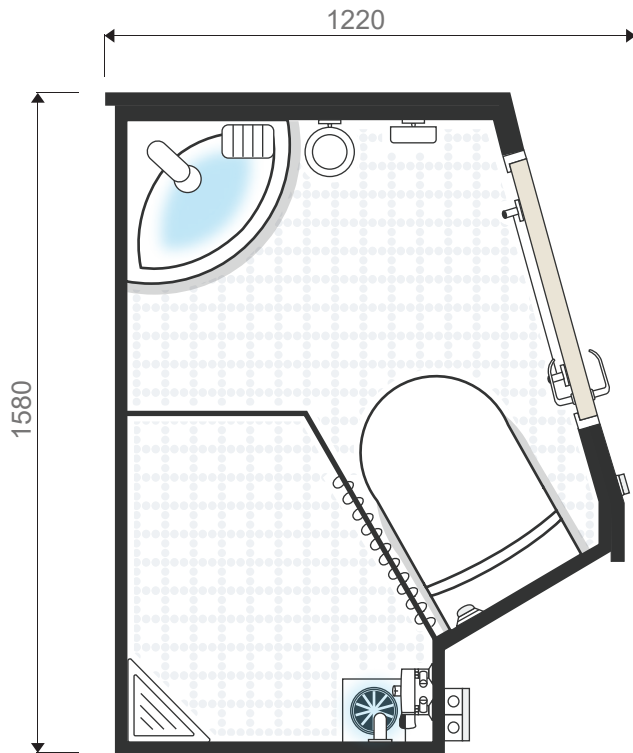
- Flexible Design
- Simple Installation
- High Quality
- Competitive Pricing
- Easy Handling



PREFABRICATED WET UNIT

HIGH-END TYPE GENERAL TYPE

We can directly produce and supply products of various designs, such as shower booth types, bathtub types, and customized designs based on customer standards.

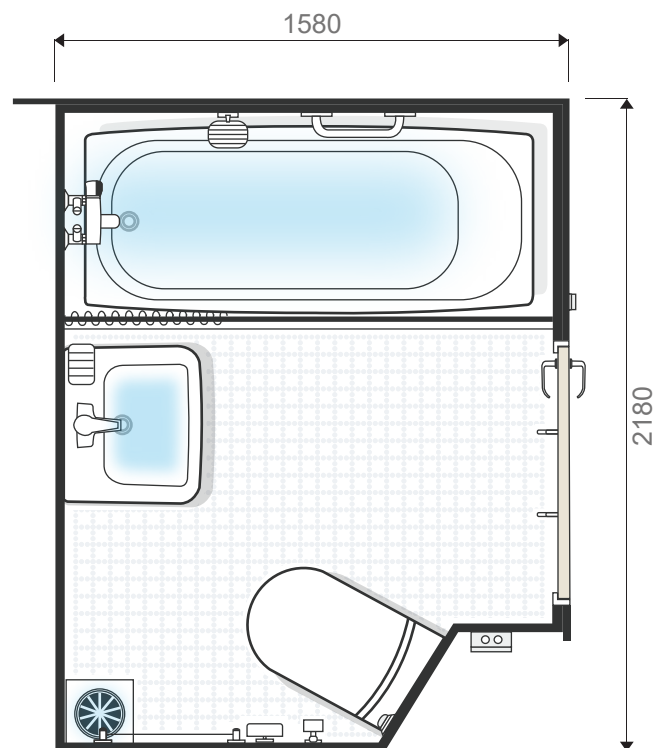


SHOWER TYPE

- Direct production and supply of products.
- Custom production based on customer requests.

BATH TYPE

- Direct production and supply of products.
- Custom production based on customer requests.



Specifications

HIGH-END TYPE GENERAL TYPE

• Shower • Bath

| No. | Description | Specification | Model no | Q'TY / SET | |
|-----|---------------------------------------|---|----------|------------|---|
| | | | | S | B |
| 1 | FLOOR | NON-SLIP MOSAIC TILE & ON 3.2mm STEEL PLATE | - | 1 | 1 |
| 2 | INSIDE WALL PANEL | PVC LAMINATED ON 0.6mm GALV'D STEEL PLATE W/15mm MINERAL WOOL, TOTAL THK. 30mm | - | 1 | 1 |
| 3 | OUTSIDE WALL PANEL | PVC LAMINATED ON 0.6mm GALV'D STEEL PLATE W/15mm MINERAL WOOL, TOTAL THK. 20mm | - | 1 | 1 |
| 4 | DOOR & FRAME | BLADE : PVC FILM LAMINATED ON 0.6mm GALV'D STEEL SHEET CLEAR SIZE : 600(W) x 1800(H), 800(W) x 1800(H)_111 RM. ONLY FRAME : BAKED ENAMEL PAINTED ON 1.6mm STEEL PLATE | - | - | 1 |
| | | BLADE : PVC FILM LAMINATED ON 0.6mm GALV'D STEEL SHEET CLEAR SIZE : 600(W) x 1800(H) FRAME : BAKED ENAMEL PAINTED ON 1.2mm STEEL PLATE | - | 1 | - |
| 5 | BATH TUB | GLASS FIBER REINFORCED PLASTIC(SMC) W/OVER FLOW WHITE | - | - | 1 |
| 6 | WATER CLOSET | WALL MOUNTED WHITE VITREOUS CHINA VACUUM TYPE (VACDRIN) | - | 1 | 1 |
| 7 | SOIL PIPE (VACUUM SYSTEM) | Ø50 OUTLET W/RUBBER HOSE JOINT | - | 1 | - |
| 8 | WASH BASIN | WHITE VITREOUS CHINA SINGLE LEVER FAUCET W/POP UP WASTE | - | - | 1 |
| | WASH BASIN (CORNER TYPE) | WHITE VITREOUS CHINA SINGLE LEVER FAUCET W/POP UP WASTE | - | 1 | 0 |
| 9 | SHOWER MIXER | THERMOSTATIC MIXING VALVE W/TELEPHONE TYPE SHOWER HEAD & HOSE & SLIDE BAR | - | 1 | - |
| 10 | BATH MIXER | THERMOSTATIC MIXING VALVE W/TELEPHONE TYPE SHOWER HEAD & HOSE | - | - | 1 |
| 11 | TOILET CABINET | MOULDED PLASTIC BODY W/MIRROR (TC01-AC2-C1) | - | - | 1 |
| | TOILET CABINET (CORNER TYPE) | MOULDED PLASTIC BODY W/MIRROR (TC04-SC2-C1) | - | 1 | - |
| 12 | FLOOR SCUPPER & DRAIN / WASTE PIPE | SUS 304 FRAME W/Ø150 SUS 304 GRATING & 40A SPP W/RUBBER HOSE JOINT | - | 2 | 1 |
| 13 | SHOWER CURTAIN | WATER PROOF TYPE CURTAIN WITH AL. RAIL | - | - | 1 |
| | | POLYESTER CURTAIN WITH AL. RAIL | - | 1 | - |
| 14 | TASSEL HOOK | CHROME PLATED BRASS(CTH-01) | - | 1 | 1 |
| 15 | HOT WATER PIPE | Ø12 PVC COVERED COPPER PIPE W/BITE TYPE UNION BALL VALVE (Ø12xPF1/2") W/ SUS FLEXIBLE HOSE(300L) | - | 1 | 1 |

Specifications

HIGH-END TYPE GENERAL TYPE

• Shower • Bath

| No. | Description | Specification | Model no | Q'TY / SET | |
|-----|-------------------------------|--|----------|------------|---|
| | | | | S | B |
| 16 | FRESH WATER PIPE | Ø12 PVC COVERED COPPER PIPE W/BITE TYPE UNION BALL VALVE (Ø12xPF1/2") W/ SUS FLEXIBLE HOSE(300L) | - | 1 | 1 |
| 17 | EXHAUST VALVE | KU-100/WHITE WALL MOUNTING TYPE W/ELBOW CONNECTOR | - | 1 | 1 |
| 18 | JUNCTION BOX (FOR LIGHT) | ABS RESIN (4-GLAND, 6P), IP44 | - | 1 | 1 |
| 19 | JUNCTION BOX (FOR SPEAKER) | ABS RESIN (4-GLAND, 6P), IP44 | - | 1 | 1 |
| 20 | MIRROR LIGHT | LED11W, CEILING MOUNTING TYPE W/SHAVER SOCKET, IP44 (AC 220V, 60Hz, 1Ø), RECEPTACLE(UNIVERSAL TYPE) WITH ISOLATION TRANSFORMER | - | - | 1 |
| | | LED 8W, CEILING MOUNTING TYPE W/SHAVER SOCKET, IP44 (AC 220V, 60Hz, 1Ø) WITH ISOLATION TRANSFORMER | - | 1 | - |
| 21 | DOOR SWITCH | KSW-F11, POLAR WHITE (AC 250V 16AX / 1WAY, IP 20) | - | 1 | 1 |
| 22 | SPEAKER(1W) (FOR U/T) | W/T FLUSH TYPE 1W SPEAKER (YARD SUPPLY) | - | 1 | 1 |
| 23 | SHOWER COAMING | 2.0t SUS PLATE W/Ø12.7 SUS ROUND BAR (HEIGHT : 100mm) | - | 1 | - |
| 24 | CORNER SHELF | SUS & CHROME PLATED BRASS(KS-02) | - | 1 | - |
| 25 | TOWEL BAR | SUS & CHROME PLATED BRASS(TB-03) | - | 1 | 1 |
| 26 | SOAP DISH FOR WASH BASIN | STAINLESS STEEL(SD-04) | - | 1 | 1 |
| 27 | SOAP DISH FOR SHOWER | SUS & CHROME PLATED BRASS(SD-03) | - | - | 1 |
| 28 | PAPER HOLDER | SUS & CHROME PLATED BRASS(PH-03) | - | 1 | 1 |
| 29 | GRAB RAIL | SUS & CHROME PLATED BRASS(GR-03) | - | 2 | 2 |
| 30 | COAT & HAT HOOK | SUS & CHROME PLATED BRASS(CH-02) | - | 1 | 2 |
| 31 | DOOR ADJUSTER | SUS & CHROME PLATED BRASS(KDA-02) | - | - | 1 |
| | | SUS & CHROME PLATED BRASS(938.64.002) | - | 1 | - |
| 32 | TOILET BRUSH | SPONGE TYPE | - | - | 1 |
| | | BRASS CHROME PLATED & PLASTIC (TOILET BRUSH HOLDER-02) | - | 1 | - |
| 33 | CLOTHES LINE | STAINLESS STEEL(KL-01) | - | - | 1 |

· Wall Panel

Surface finish: 0.6mm thick galvanized steel sheet finished with decorative material.

Standard width: 510mm, Maximum length: 2400mm.

| Type | Model no. | Thickness | Fire class | Weight | Sound reduction | Thermal transmittance |
|---|-----------|-----------|------------|-----------------------|---------------------|------------------------------|
|  | W-30 | 30mm | B-0 | 12kg/m ² | STC 29dB | 1.62kcal/m ² h °C |
|  | W-30D | 45mm | B-15 | 15kg/m ² | STC 29dB | 0.81kcal/m ² h °C |
|  | W-50 | 50mm | B-15 | 19.2kg/m ² | STC 39dB RW 42dB | 0.52kcal/m ² h °C |
|  | W-80 | Min. 80mm | B-15 | 24kg/m ² | STC 44dB | 0.48kcal/m ² h °C |

· Ceiling Panel

Surface finish: 0.6mm thick galvanized steel sheet finished with decorative material.

Standard width: 510mm, Maximum length: 2400mm.

| Type | Model no. | Thickness | Fire class | Weight | Sound reduction | Thermal transmittance |
|---|-----------|-----------|------------|---------------------|-----------------|------------------------------|
|  | C30 | 30mm | B-0 | 12kg/m ² | STC 52dB | 1.62kcal/m ² h °C |
|  | C30D | 45mm | B-15 | 15kg/m ² | STC 53dB | 0.81kcal/m ² h °C |
|  Incl. Steel deck | C30A | 30mm | B-0 | 12kg/m ² | - | 1.62kcal/m ² h °C |

· Approval certificates

| Type | Fire class | Classification / Authority | | | | |
|-------------|------------|----------------------------|-----|----|----|----------|
| | | ABS | DNV | KR | LR | BV / MED |
| KME-UT-W30 | B-0 | ○ | ○ | ○ | ○ | ○ |
| KME-UT-C30 | B-0 | ○ | ○ | ○ | ○ | ○ |
| KME-UT-C30A | B-0 | ○ | ○ | ○ | ○ | ○ |
| KME-UT-W50 | B-15 | ○ | ○ | ○ | ○ | ○ |
| KME-UT-W80 | B-15 | ○ | ○ | ○ | ○ | ○ |
| KME-UT-C30D | B-15 | ○ | ○ | ○ | ○ | ○ |



· **ADDRESS** : 29, Nakdong-daero1302 beon-gil, Sasang-gu, Busan, South Korea
· **TEL** : +82-51-327-2670 · **FAX** : +82-51-327-2673 · **E-mail** : sales@h-kme.com